


[+ System Builder Program](#)
[- Product Information](#)

- [Windows XP](#)
- [Windows 2000](#)
- [Windows Millennium](#)
- [Windows NT](#)
- [Windows 98](#)
- [Windows 95](#)
- [Office XP](#)
- [Office 2000](#)
- [Office 97](#)
- [Server Group](#)
- [Hardware](#)
- [Applications](#)
- [16-Bit Operating Systems](#)

[+ Ordering Product](#)
[+ Anti-Piracy](#)

## Search:

## Useful Links:

- [Quick Reference Guide](#)
- [Newsgroups](#)
- [Find a Distributor](#)
- [Preinstallation Exams](#)
- [Hardware Compatibility](#)
- [Hardware Links](#)
- [Drivers and Downloads](#)
- [Knowledge Base](#)
- [Online Part Numbers](#)
- [Readiness Centers](#)
- [Online Training Archive](#)
- [OEM Licensing](#)
- [Sales Training and Exams](#)

Product Information : [Windows XP](#)

## Installing & Configuring Hardware Devices on Windows XP Professional



### Archive

Click [here](#) to review past Tips & Tricks.

You are going to just love this opening sentence. BEFORE YOU INSTALL ANY HARDWARE (and, I do mean any) CHECK TO MAKE SURE THAT THE DEVICE IS LOCATED ON THE HARDWARE COMPATIBILITY LIST (HCL). Those of you that know me...you know this! And, I don't want to get any emails that say something like, 'Hey, Cleve...I got a 128 gig sound card! And guess what? It only cost me 42 and a half cents! And it doesn't work with Windows XP. So.....what do I do?' My answer is simple suffer.....!

**TIP:** The HCL is located at: <http://www.microsoft.com/hcl>

**TIP:** Depending on the hardware device, there are certain factors that will affect the installation or the operation of that particular device. For example, if the device is not on the HCL then the device is configured without user intervention. Also, if the device is on the HCL then the driver is most likely the most updated version and it is also reliable!

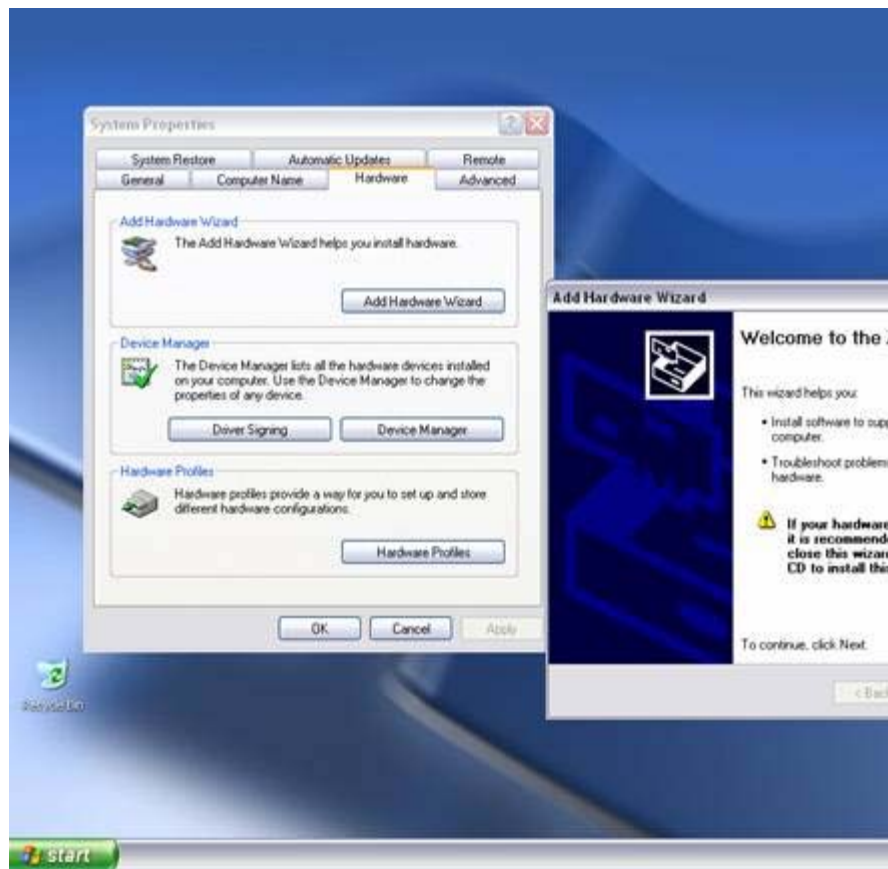
1. To install a non-PnP device connect the device to the system and use the Add Hardware Wizard. To open the Add Hardware Wizard, click Start->right click My Computer->Hardware->Add Hardware Wizard.



2. Click Properties



3. Click the Hardware tab and click Add Hardware Wizard



**TIP:** A most important note here for everyone. Make sure that you are an Administrator or that the user who is logged on has administrative rights. To use the Add Hardware Wizard, the user must be an Administrator or a member of the Administrators group.

Once the device is installed, the setup program with the device should specify what drivers are required for that device to be able to communicate with the Windows system. Depending on the device that you have installed, you may have to install the device using the Device Manager.

4. To run Device Manager, click Start, right click My Computer, and click Manage.



5. Under System Tools, click Device Manager





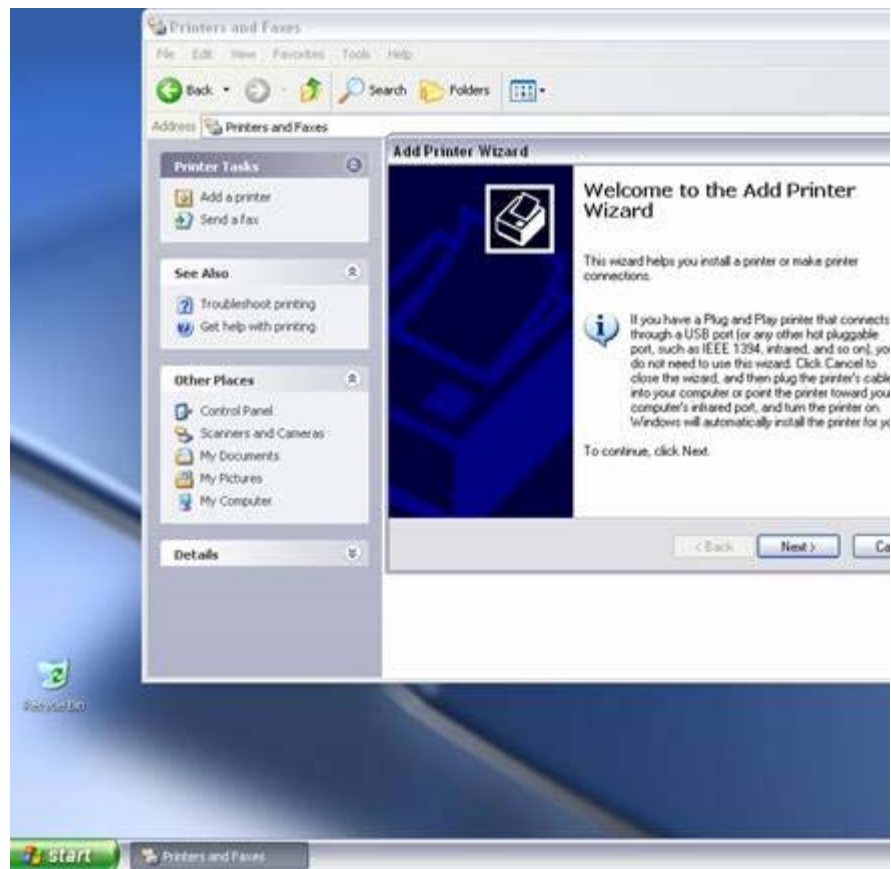
7. Click Printers and Other Hardware



8. Click Printers and Faxes



9. Under Printer Tasks, click Add a Printer.



Click Next and you are off and running.

I know...I know...I know! You know a lot of this stuff. But, some of you don't an little backwards stuff to go forward, especially since we have a new interface. V have to play with it. We have to become ever so familiar with it.

Granted, we didn't run each of these wizards. Run the wizards yourself. If you l with them, email me at: [clevek@microsoft.com](mailto:clevek@microsoft.com) and I will do my best to clear t will probably make them ever so much more confusing for you.

© 2001 Microsoft and/or its suppliers. All rights reserved.

[System Builder Web Site Privacy Statement.](#)

Microsoft® OEM products are licensed to system builders by Microsof Licensing Inc., a wholly owned subsidiary of Microsoft Corporation.